

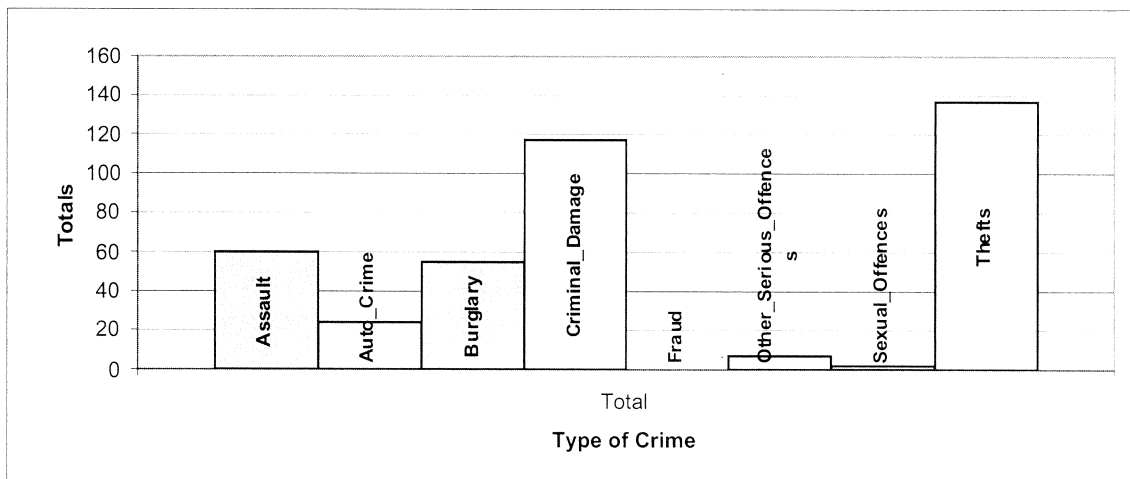
ORGNM	ASSAULT	AUTO_CRIME	BURGLARY	CRIMINAL_DAMAGE	OTHER_SERIOUS_OFFENCES	THEFTS	SEXUAL_OFFENCES	Grand Total
ACOMB PRIMARY SCHOOL	0	1	2	13	2	0	0	18
ALL SAINTS RC COMPREHENSIVE SCHOOL	2	1	1	1	1	11	0	17
ARCHBISHOP HOLGATES SCHOOL	5	1	8	8	0	7	0	29
ARCHBISHOP OF YORK C OF E JUNIOR SCHOOL	0	0	0	1	0	0	0	1
BADGER HILL PRIMARY SCHOOL	0	0	1	0	0	1	0	2
BCOTHAM SCHOOL	1	0	3	2	0	1	0	7
BURNHOLME COMMUNITY COLLEGE	1	0	0	0	0	0	0	1
BURTON GREEN PRIMARY	0	0	0	0	0	2	0	2
CANON LEE SCHOOL	8	0	0	0	0	5	0	13
CARR INFANT SCHOOL	0	0	1	3	0	0	0	4
CARR JUNIOR SCHOOL	0	0	0	1	1	0	0	2
CLIFTON GREEN PRIMARY SCHOOL	1	3	1	14	0	0	1	21
CLIFTON WITHOUT JUNIOR SCHOOL	0	0	0	1	0	2	0	3
COPMANTHORPE PRIMARY SCHOOL	1	0	0	1	0	0	0	2
DERWENT JUNIOR SCHOOL	0	0	0	2	0	1	0	3
DRINGHOUSES PRIMARY SCHOOL	1	0	2	0	0	0	0	3
ELVINGTON PRIMARY SCHOOL	0	0	0	1	0	0	0	1
ENGLISH MARTYRS RC PRIMARY SCHOOL	0	0	0	1	0	1	0	2
FISHERGATE PRIMARY SCHOOL	1	0	1	1	2	5	0	10
FULFORD SCHOOL	0	1	1	1	0	0	0	3
HAXBY ROAD PRIMARY SCHOOL	0	0	1	2	0	0	0	3
HEADLANDS PRIMARY SCHOOL	0	0	0	0	0	1	0	1
HEWORTH C OF E PRIMARY SCHOOL	5	1	2	5	0	3	0	16
HOB MOOR SCHOOL	0	0	1	0	0	1	0	2
HUNTINGTON PRIMARY SCHOOL	2	3	2	5	1	18	0	31
HUNTINGTON SCHOOL	10	0	1	2	0	9	1	23
JOSEPH TOWN TREE SCHOOL	0	0	0	1	0	0	0	1
KNAVESMIRE PRIMARY SCHOOL	0	0	2	1	0	2	0	5
LORD DERAMORES PRIMARY SCHOOL	3	1	0	2	0	10	0	16
LOWFIELD SCHOOL	3	0	5	1	0	8	0	17
MANOR C OF E SCHOOL	4	0	3	14	0	16	0	37
MILLTHORPE SCHOOL	0	0	0	3	0	1	4	8
NEW EARSWICK PRIMARY SCHOOL	0	2	1	0	0	0	0	3
NORTHFIELD SCHOOL	6	0	3	13	0	5	0	27
OAKLANDS SCHOOL	0	0	2	0	0	1	0	3
OSBALDWICK PRIMARY SCHOOL	0	0	2	0	0	1	0	3
OUR LADYS RC PRIMARY SCHOOL	0	0	0	1	0	1	0	2
PARK GROVE SCHOOL	0	1	0	1	0	3	0	4
POPPLINGTON ROAD PRIMARY SCHOOL	0	1	1	0	0	1	0	3
ROBERT WILKINSON PRIMARY SCHOOL	1	0	0	2	0	0	0	3
SCARCROFT PRIMARY SCHOOL	1	1	0	0	0	0	0	2
SKELTON PRIMARY SCHOOL	0	0	0	5	0	0	0	5
ST AELREDS RC PRIMARY SCHOOL	0	0	0	1	0	2	0	3
ST GEORGES RC PRIMARY SCHOOL	0	2	0	0	0	0	0	2
ST LAWRENCE'S C OF E PRIMARY SCHOOL	0	0	0	0	0	1	0	1
ST MARY'S PRIMARY SCHOOL	0	1	1	0	0	0	0	2
ST OLAVES SCHOOL	0	1	0	0	0	1	0	2
ST OSWALDS SCHOOL	2	2	3	2	0	9	0	18
ST PETERS SCHOOL	0	0	1	0	0	0	0	1
ST WILFRIEDS RC PRIMARY SCHOOL	0	0	0	1	0	0	0	1
STRENSALL JUNIOR SCHOOL	0	0	0	1	0	0	0	1
THE MINSTER SCHOOL	0	1	1	0	0	1	0	3
THE MOUNT SCHOOL	1	0	1	0	0	0	0	2
WHELDRAKE PRIMARY SCHOOL	0	0	0	0	0	2	0	2
WOODTHORPE PRIMARY SCHOOL	0	1	2	1	0	1	0	5
YEARSLEY GROVE PRIMARY SCHOOL	0	0	1	1	0	2	0	4
YORK STEINER SCHOOL	60	24	55	117	7	137	2	402
Grand Total	60	24	55	117	7	137	2	402

Architectural Liaison Officer Report

Crime Analysis Study Area:	=	Crimes at York Schools
Details of Search	=	Using initial keywords of "School" or "Pupil"
	=	Then Locations checked to make sure on School Premises
Study Period Start:	=	01/04/2005
Study Period End:	=	31/03/2006
Date Study Completed	=	26/06/2007
Number of Months in Study Period	=	12
Geocoding Accuracy Rate	=	95%

Crime Group	Total
Assault	60
Auto_Crime	24
Burglary	55
Criminal_Damage	117
Fraud	0
Other_Serious_Offences	7
Sexual_Offences	2
Thefts	137
Grand Total	402

A Table of Crime in the Study Area (Above) and corresponding Graph (Below)



A Table of Crime by Crime Group and then Crime Type

EVENT_GROUP	HO_DESCRIPTION	Total
ASSAULT	ASSAULT ON CONSTABLE	3
	COMMON ASSAULT ETC.	12
	HARRASSMENT	1
	OFFENCE OF HARRASSMENT	1
	OTHER WOUNDING ETC.	38
	POSSESSION OF WEAPONS WITH INTENT	1
	PUBLIC ORDER OFFENCES	4
AUTO_CRIME	AGGRAVATED TAKING OF VEH BY INJURY DAMAGE	1
	THEFT FROM VEHICLE	15
	THEFT OR UNAUTHORISED TAKING MOTOR VEHICLE	2
	VEHICLE INTERFERENCE	6
BURGLARY	BURGLARY IN A BUILDING OTHER THAN A DWELLING	53
	BURGLARY IN A DWELLING	2
CRIMINAL_DAMAGE	ARSON	5
	CRIMINAL DAMAGE OTHER	24
	CRIMINAL DAMAGE TO OTHER BUILDINGS	77
	CRIMINAL DAMAGE TO VEHICLES	11
OTHER_SERIOUS_OFFENCES	TRAFFICKING IN CONTROLLED DRUGS	7
SEXUAL_OFFENCES	INDECENT ASSAULT ON A FEMALE	2
THEFTS	OTHER THEFT OR UNAUTHORISED TAKING	63
	ROBBERY OF PERSONAL PROPERTY	3
	THEFT FROM THE PERSON OF ANOTHER	6
	THEFT OF PEDAL CYCLE	65
Grand Total		402

A Table of Crime by Month of the Year and Hour of the Day in the Study Area

Month	Total
Jan	31
Feb	29
Mar	13
Apr	36
May	43
Jun	25

Month	Total
Jul	30
Aug	26
Sep	39
Oct	30
Nov	61
Dec	39

Crime Day	Total
Mon	61
Tue	47
Wed	67
Thu	73
Fri	92
Sat	35
Sun	27
Grand Total	402

Grand Total

402

Expected Average Crime per Month = **33.5**

Expected Average Crime per Day = **57.4**

A Table of Crime by Hour of the Day in the Study Area

	00:00	01:00	02:00	03:00	04:00	05:00	06:00	07:00	08:00	09:00	10:00	11:00	12:00	13:00	14:00	15:00	16:00	17:00	18:00	19:00	20:00	21:00	22:00	23:00	Total
Total	10	1	0	1	0	0	3	3	31	19	10	12	43	28	24	43	19	37	41	34	17	17	5	4	402

